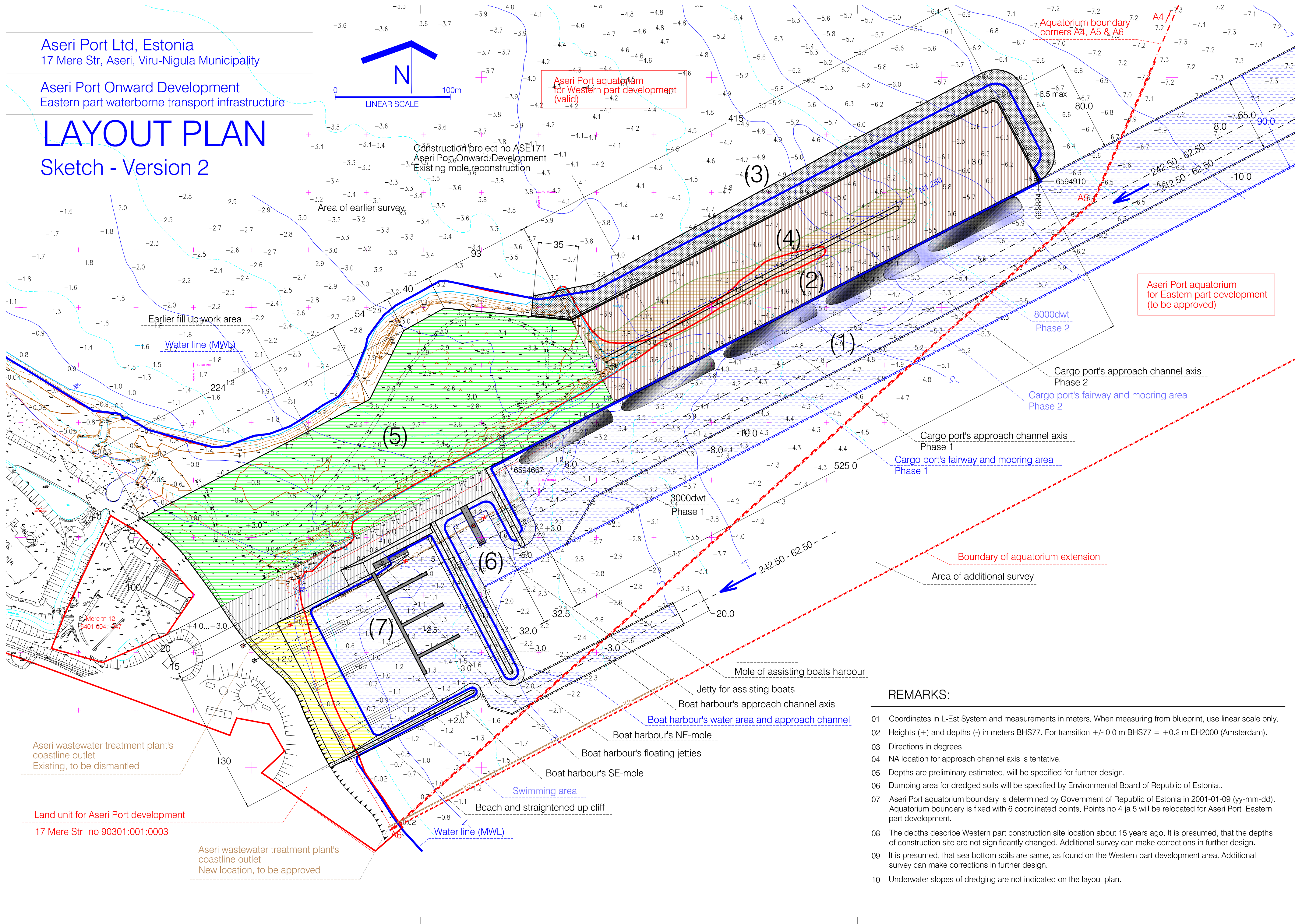


Aseri Port Ltd, Estonia
17 Mere Str, Aseri, Viru-Nigula Municipality

Aseri Port Onward Development
Eastern part waterborne transport infrastructure

LAYOUT PLAN

Sketch - Version 2



EKSPLIKATION

- (1) Cargo port approach channel

Phase 1: Wide min 65m and depth min -8,0m abs for mixed cargo ships 3000dwt, incl mooring.
Phase 2: Wide min 90m and depth min -10,0m abs for mixed cargo ships 8000dwt, incl mooring.
Approach direction 242.50 degrees.
For day and night one-direction navigation, fixed and floating navigation aids.
Aseri Port aquatorium will be expanded for approach channel dredging.
- (2) Cargo port berthing structures

Phase 1: Quays for 5 mixed cargo ships a' 3000dwt.
Phase 2: Quays for 2 mixed cargo ships a' 3000dwt and 2 mixed cargo ships a' 8000dwt.
The berth line total length 525m and height +3.0m abs.
Bearing structures: reinforced concrete and steel.
Equipment: fenders, bollards, lighting, life-saving.
Ship supply: power, water.
Construction works on sea bottom in phase 1.
- (3) Cargo port yard shore protection

Wave wall: top height max +6,5m abs, length 530m, reinforced concrete structures.
Slope armoring: depth up to -5,0m abs, granite stone and reinforced concrete elements on limestone slope.
- (4) Cargo port new yard area

Area 33200m2.
Filling material: limestone up to depth -6,3m abs.
Pavement: concrete and asphalt-concrete on crushed stone base.
Supply: lighting, power for cargo handling equipment, rain water canalisation.
Use: cargo handling and temporary storage.
Construction works on 17 Mere Str land unit and sea bottom in phase 1.
- (5) Cargo port existing yard area reconstruction

Area 43000m2.
Filling material: limestone up to depth -3,7m abs.
Pavement: concrete and asphalt-concrete on crushed stone base.
Supply: lighting, power for cargo handling equipment, rain water canalisation.
Use: for cargo handling and temporary storage.
Construction works on 17 Mere Str land unit and sea bottom in phase 1.
- (6) Cargo port assisting boats harbour

Jetty for 2 assisting boats Loa 25m.
Bearing structures: reinforced concrete and steel.
Parking area: up to 3000m2.
Filling material: limestone up to -1,0m abs.
Pavement: asphalt-concrete on crushed stone base.
Supply: lighting, power and water for boats.
Protecting moles: limestone, granite stone.
Pavement for swimming place: gravel.
Construction works on 17 Mere Str land unit and sea bottom.
Swimming place construction is depending on possibility to reconstruct Aseri wastewater treatment plant's coastal outlet or to relocate it.
- (7) Fishermen boats harbour and swimming place (separated project)

REMARKS:

- 01 Coordinates in L-Est System and measurements in meters. When measuring from blueprint, use linear scale only.
- 02 Heights (+) and depths (-) in meters BHS77. For transition +/- 0.0 m BHS77 = +0.2 m EH2000 (Amsterdam).
- 03 Directions in degrees.
- 04 NA location for approach channel axis is tentative.
- 05 Depths are preliminary estimated, will be specified for further design.
- 06 Dumping area for dredged soils will be specified by Environmental Board of Republic of Estonia..
- 07 Aseri Port aquatorium boundary is determined by Government of Republic of Estonia in 2001-01-09 (yy-mm-dd). Aquatorium boundary is fixed with 6 coordinated points. Points no 4 ja 5 will be relocated for Aseri Port Eastern part development.
- 08 The depths describe Western part construction site location about 15 years ago. It is presumed, that the depths of construction site are not significantly changed. Additional survey can make corrections in further design.
- 09 It is presumed, that sea bottom soils are same, as found on the Western part development area. Additional survey can make corrections in further design.
- 10 Underwater slopes of dredging are not indicated on the layout plan.

LIST OF SKETCH DOCUMENTS:

1	ASE181 ES TV-4-01 Eng	LAYOUT PLAN. Sketch - Version 2	2018-04-21
---	-----------------------	---------------------------------	------------

Client and building site address Aseri Port Ltd 17 Mere Str, Aseri, Viru-Nigula Municipality	Documentation name and part Aseri Port Onward Development Eastern part waterborne transport infrastructure	Documentation and building registry sign Building project ASE181 ES Sketch
Prepared by and responsible performer AAVO JA RIINA RAIG PROJEKT OÜ Business registry code: 10262126 Aavo Raig asendajad EAR notice: EP10262126-0001 aavo.raig@projekt.com 40 Pärnu Str, Tallinn 10921, Estonia GSM: +372 6934296	Document contents LAYOUT PLAN Sketch - Version 2 Linear scale	Document no and version/modification no TV-4-01 Eng Documents date 2018-04-21 Blueprint 1:2 on the list 760 x 420 mm (centered)